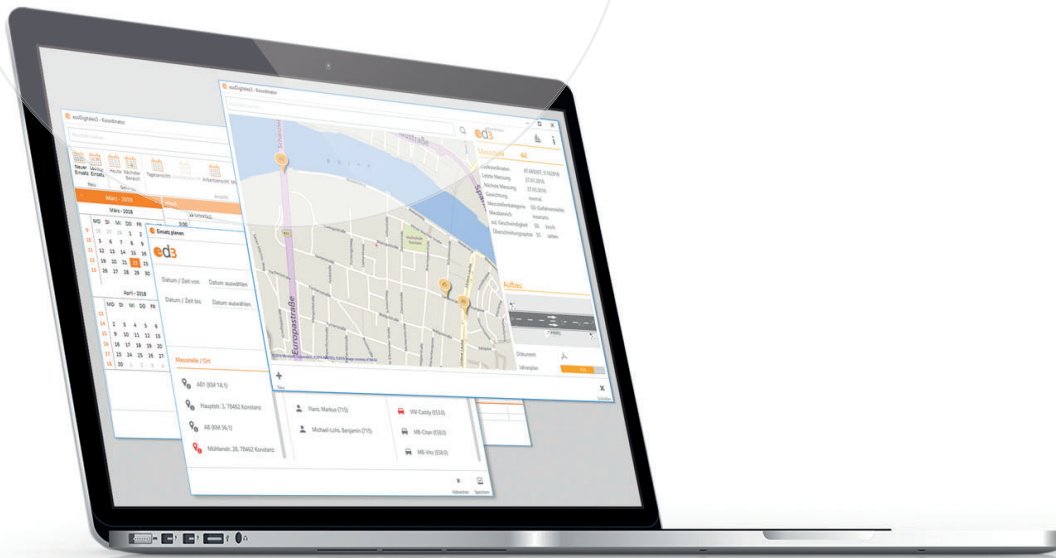


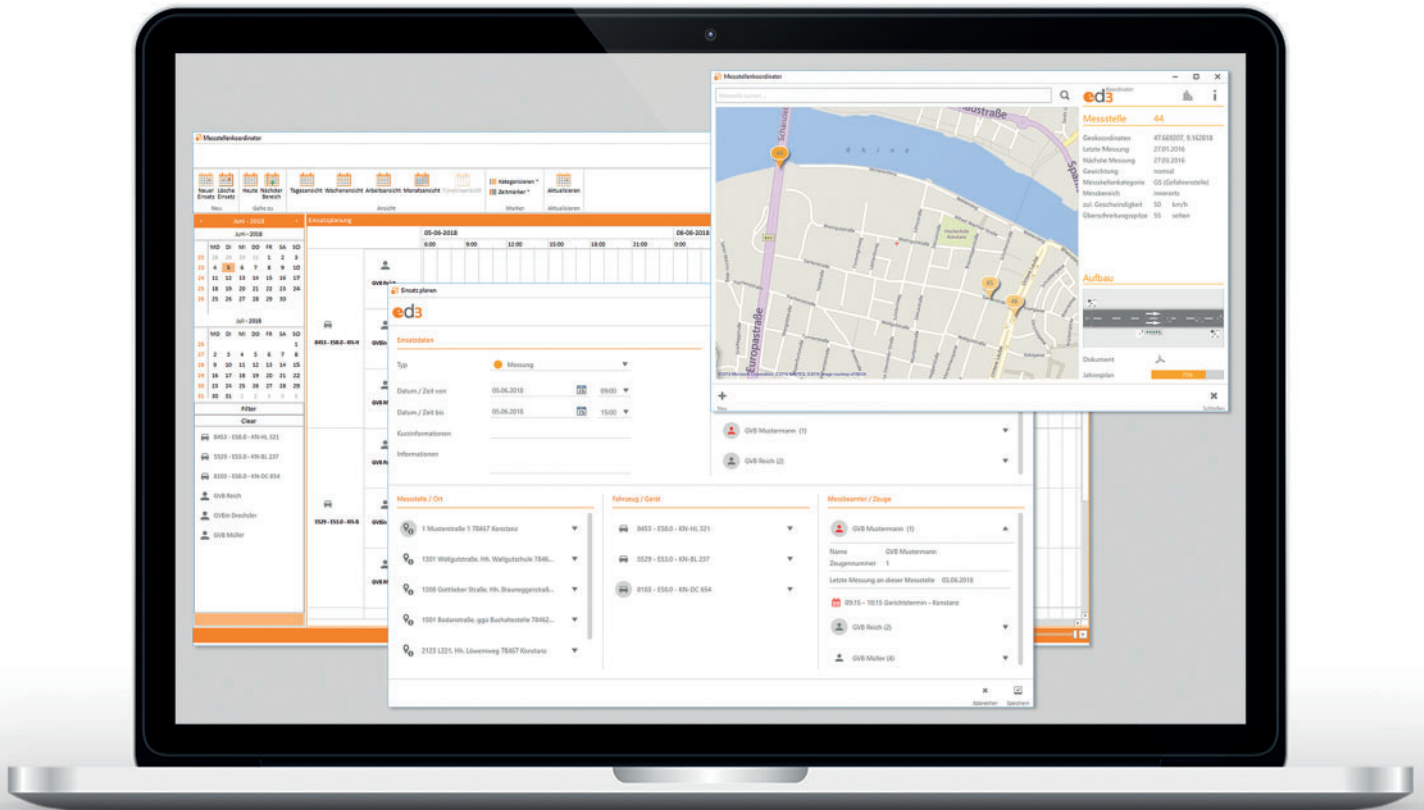
**Plan your  
operations and  
measurement sites!**

**ed3** Koordinator



## esoDigitales3-Koordinator

For operational and duty scheduling



The Koordinator is the key to transparent planning and preparation procedures

## esoDigitales3-Koordinator

Practical experience shows that many operators do not have a transparent overview of all the various resources involved in operational and duty scheduling. Several different applications are often used for scheduling, and coordination of all the resources always involves major effort. Resource conflicts frequently go undetected until operation actually begins. It often happens that measurement sites subject to a time schedule are not noticed ahead of time, so they are not started.

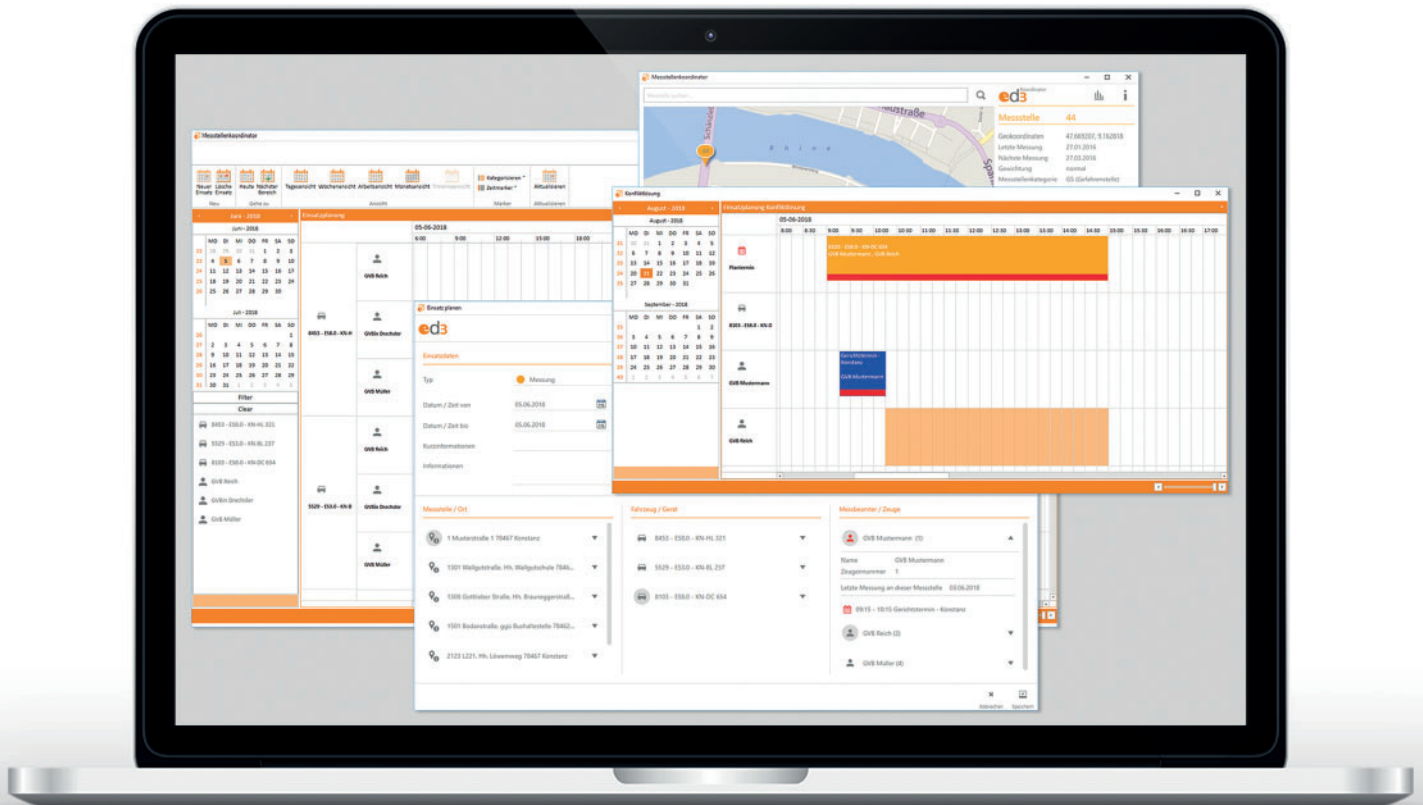
For staffing, patrol vehicles and measurement sites: thanks to its special selection screen, esoDigitales3-Koordinator supports your operational and duty scheduling by allowing you to input the availability of measurement sites, measuring instruments, vehicles and staff directly into your planning.

You can input measurement sites directly into your planning via your measuring schedule. You can selectively generate measurement records to prepare for a measurement. Afterwards, completed measurements can be re-assigned directly.

A map-based overview allows visualization of critical or overdue measurement sites. All information about the visualized measurement site can be called up directly. The direct link to planning means you can access all the relevant information about the measurement sites.

### Features of the ed3-Koordinator:

- Operational and duty scheduling.
- Input the availability of measurement sites, measuring instruments, vehicles and staff directly into your planning.
- Generate records for planned measurements.
- Map-based overview of all measurement sites.
- Visualization of critical or overdue measurement sites.
- All information about a measurement site at a glance (setup, sketches and much more).



Multi-resource operational and duty scheduling, from staffing and patrol vehicles to measurement sites.

### Resources in planning

Relevant resources are provided in the planning together with their availability status and detailed information. When coordinating, users can bring the various resources together at the desired time thanks to the clear presentation on the selection screen.

### Support with resolving resource conflicts

A "conflict resolver" provides a graphic view of resource overlaps so they can be resolved or replanned directly, without generating any new conflicts.

### Targeted view of sub-areas

Various filtering options can be applied to generate targeted views of the resources required for planning. This feature also enables targeted output of the plans for these areas.

### Planning with map view

For planning purposes, the map-based overview can be used to visualize those measurement sites that have not been started (or have not been started up promptly). Relevant measurement sites can be planned directly from the map, with their time parameters. You can simply navigate through the map to select and access the entire plan for a measurement site.

### Benefits for planning:

- Detailed information about every resource.
- Conflict resolution with graphic support.
- Combined presentation of resources.
- Central overview of individual plan sections.
- Measuring sites can be inputted with their time parameters.
- Measurement records can be generated directly with the plan information.
- Time-related information can be exported directly from your planning to the measurement sites.
- Simple to operate thanks to the intuitive user interface.
- User-based release for viewing and processing.



For more information about our products and system requirements, go to: [www.esodigitales.com](http://www.esodigitales.com)

**Kistler Instrumente AG**

Eulachstrasse 22  
 CH-8408 Winterthur  
 Telefon: +41 52 224 11 11  
 Email: [info@kistler.com](mailto:info@kistler.com)  
 Internet: [www.kistler.com](http://www.kistler.com)

**H&L Software GmbH**

Rosgartenstraße 32  
 D-78462 Konstanz  
 Telefon: +49 7531 36 39 38-0  
 Email: [info@hlsoftware.com](mailto:info@hlsoftware.com)  
 Internet: [www.hlsoftware.com](http://www.hlsoftware.com)

**KISTLER**  
 measure. analyze. innovate.

 hlsoftware